

Tsunami - 2004

INTRODUCTION

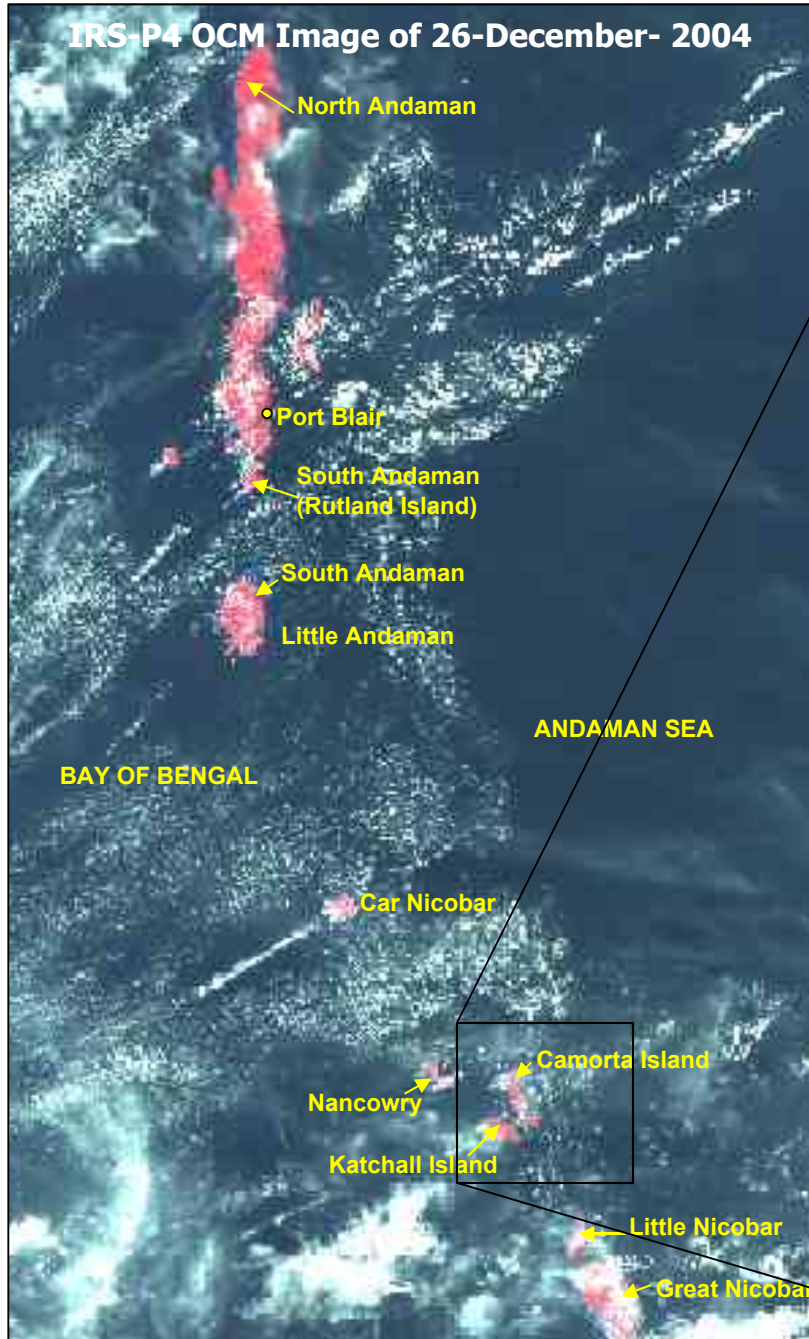
A devastating earthquake of high magnitude has occurred on December, 26, 2004 off the west coast of Sumatra, Indonesia. The resulting Tsunami killed thousands of people in Southern India, Sri Lanka, Indonesia, etc. In India, Andaman and Nicobar islands, Tamil Nadu, Pondicherry, Andhra Pradesh, Kerala were worst hit.

National Remote Sensing Agency, Dept. of Space, Govt. of India made all possible efforts to monitor this catastrophic event. Satellite data of different resolutions was acquired, analyzed and the value-added information is being disseminated to concerned.

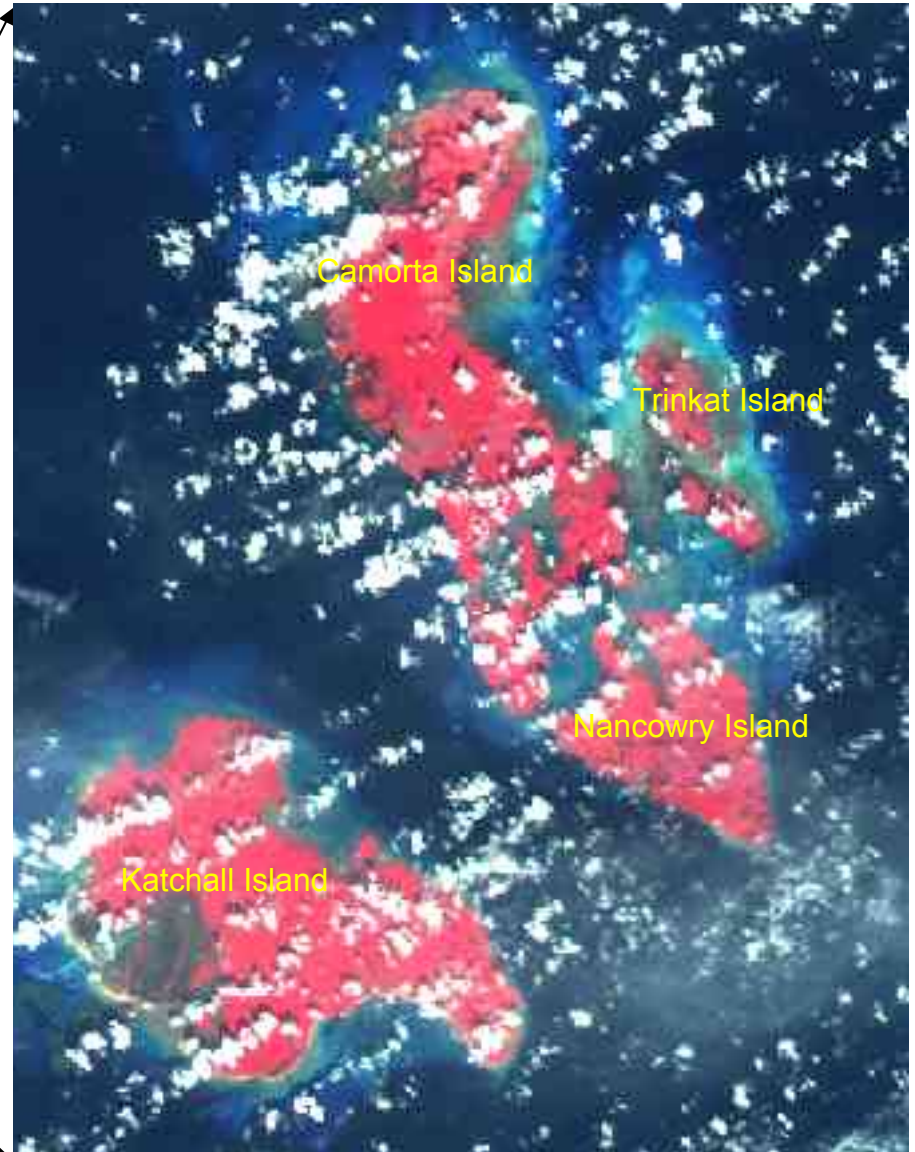
The following pictures show some portions of the worst-hit Andaman and Nicobar islands and part of Andhra Pradesh and Chennai coast.

You may kindly highlight “**Courtesy: National Remote Sensing Agency**” while using the images. In the images, red depicts vegetation, white depicts clouds and shades of blue indicate types of water.

Surroundings of Andaman and Nicobar Islands as observed from IRS-P4 and IRS-P6 satellites



IRS-P6 AWiFS Image of 26-Dec-04

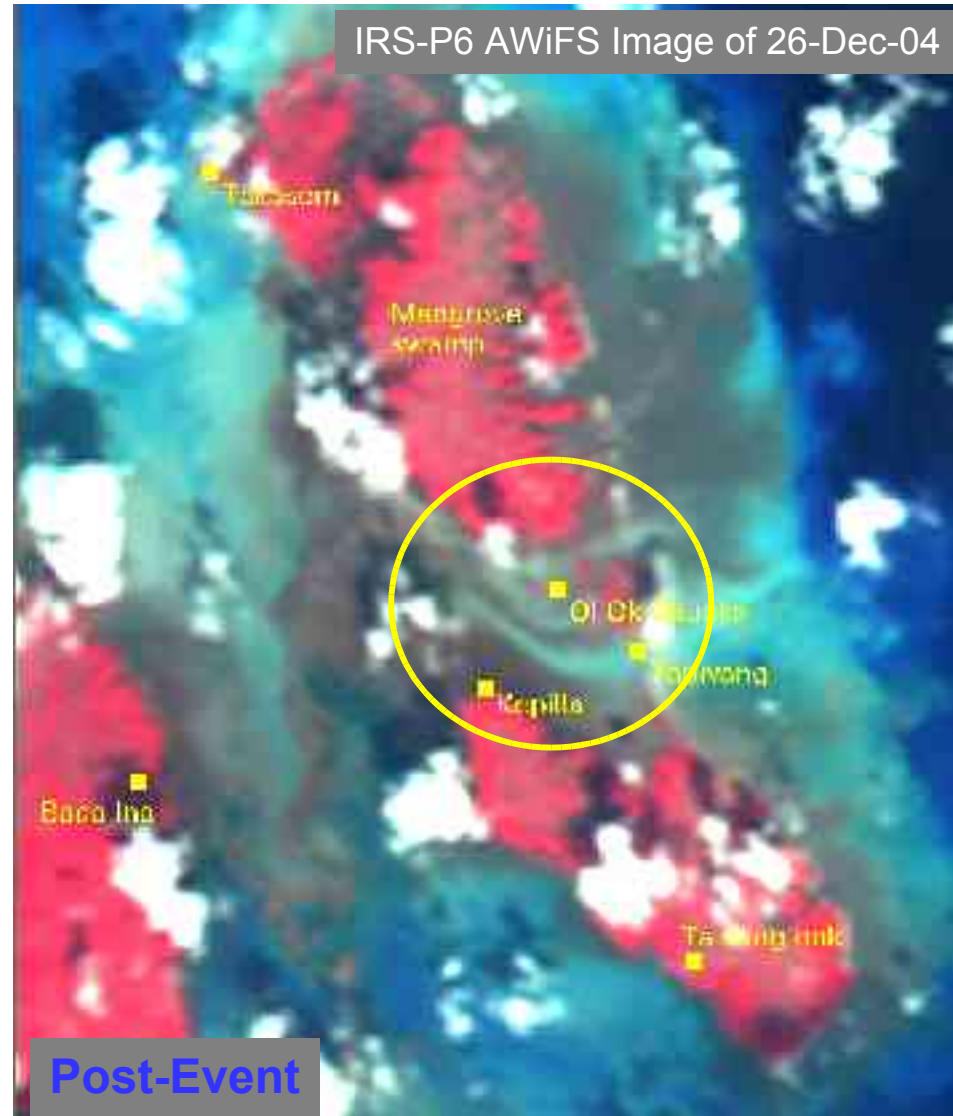
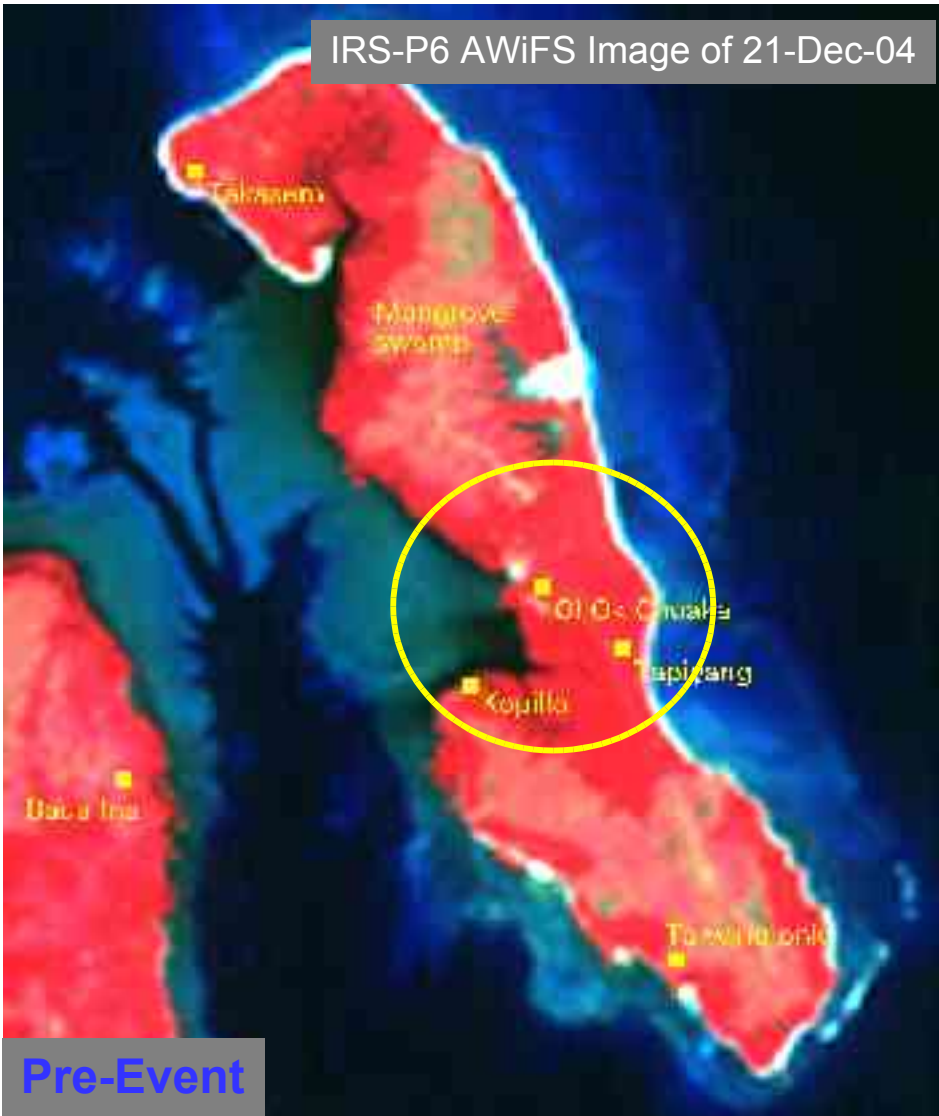


Tsunami - 2004

A Close View of Trinkat Island

IRS-P6 AWiFS Image of 21-Dec-04

IRS-P6 AWiFS Image of 26-Dec-04



Tsunami - 2004

A Close View of Camorta Island

IRS-P6 AWiFS Image of 21-Dec-04



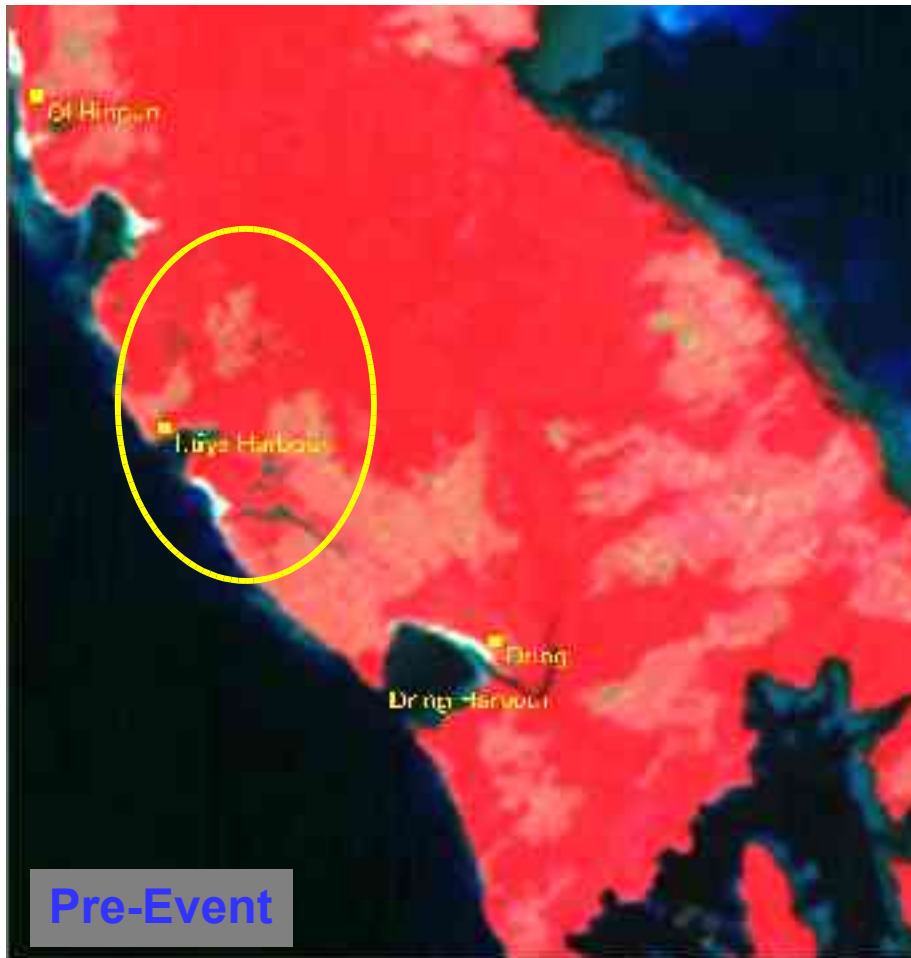
IRS-P6 AWiFS Image of 26-Dec-04



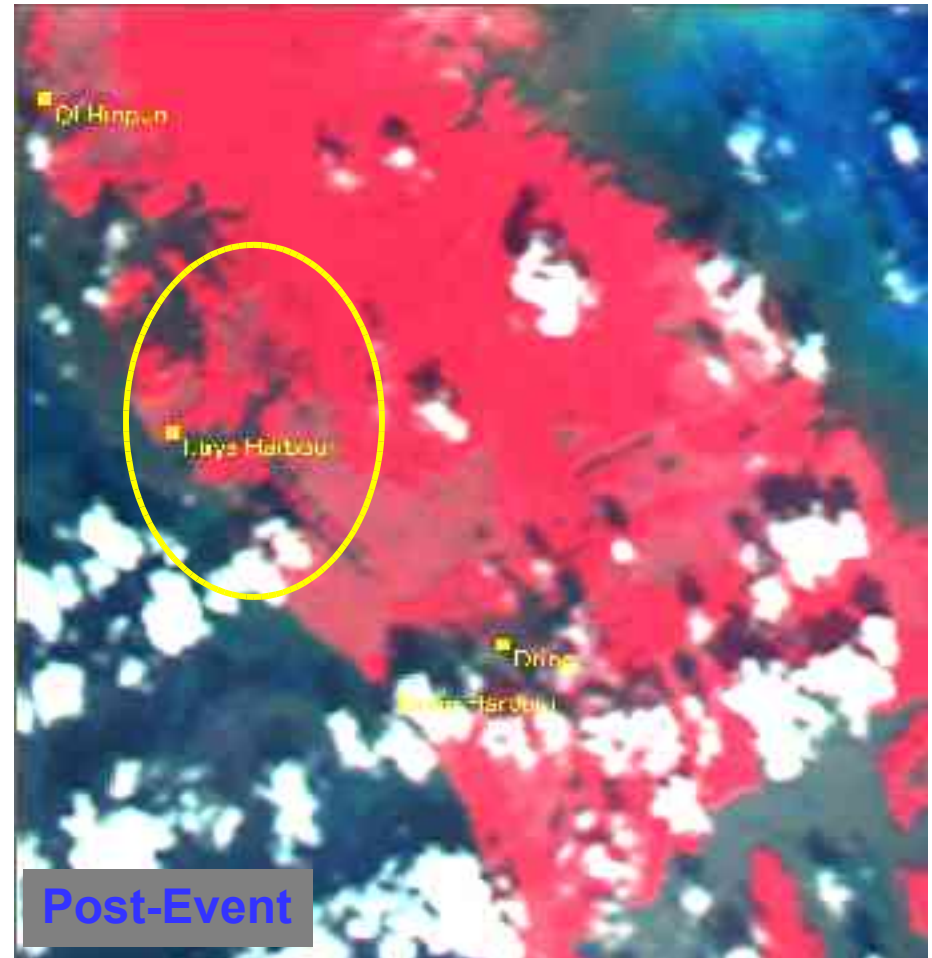
Tsunami - 2004

A Close View of Camorta Island

IRS-P6 AWiFS Image of 21-Dec-04



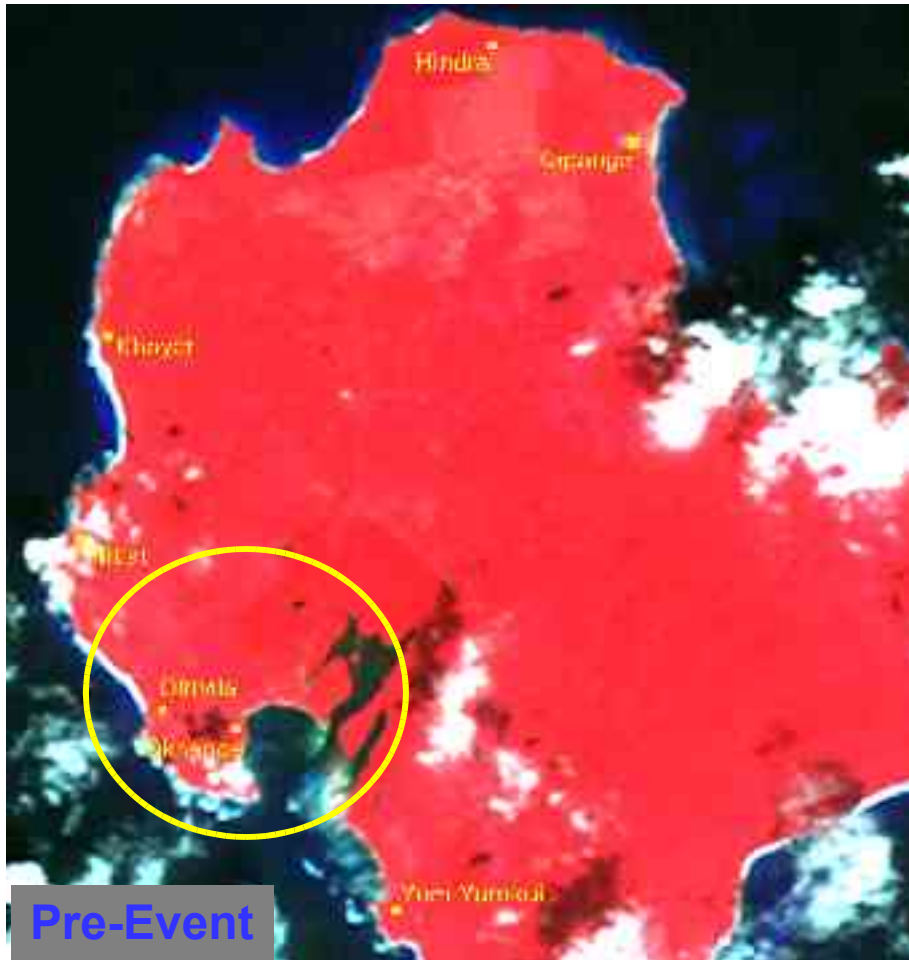
IRS-P6 AWiFS Image of 26-Dec-04



Tsunami - 2004

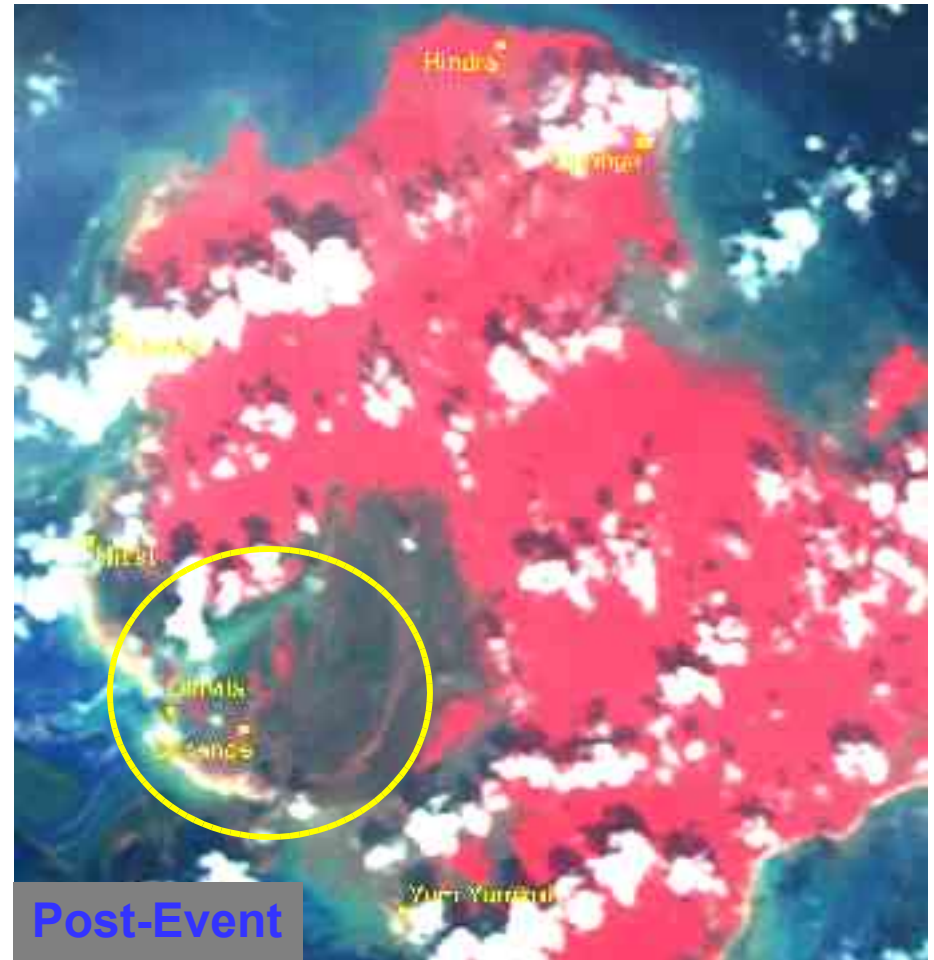
A Close View of Katchall Island

IRS-P6 AWiFS Image of 21-Dec-04



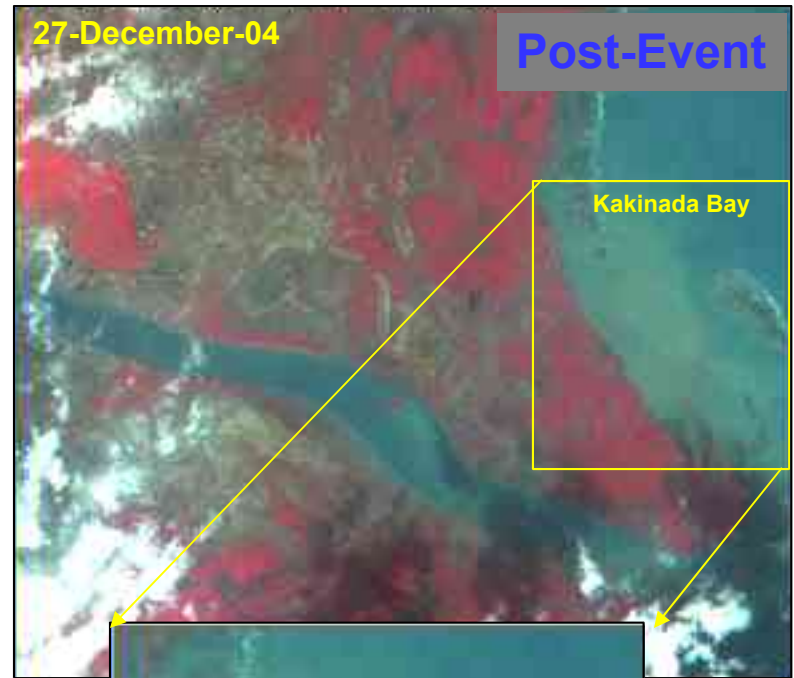
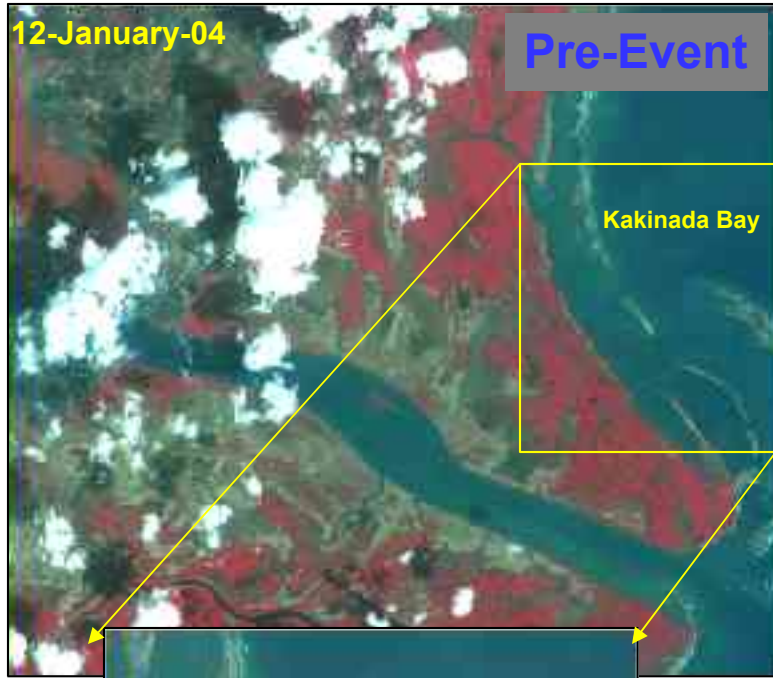
Pre-Event

IRS-P6 AWiFS Image of 26-Dec-04



Post-Event

IRS-P6 L4 MX Images showing the situation in the surroundings of Kakinada Port in Andhra Pradesh



Tsunami - 2004

Part of Chennai City

IRS-P6 L4 MX Image of 12-Jan-04



IRS-P6 L4 MX Image of 27-Dec-04



Tsunami - 2004

Part of Chennai City

IRS-P6 L4 MX Image of 12-Jan-04



IRS-P6 L4 MX Image of 27-Dec-04



Tsunami - 2004

Part of Chennai City

IRS-P6 L4 MX Image of 12-Jan-04

IRS-P6 L4 MX Image of 27-Dec-04



Tsunami - 2004

Machilipatnam Area, Andhra Pradesh

18-Dec-2004

IRS-P6 AWiFS Data

27-Dec-2004

